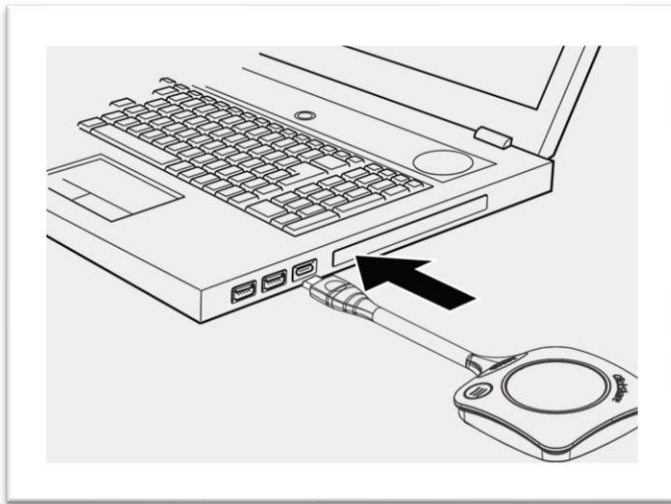


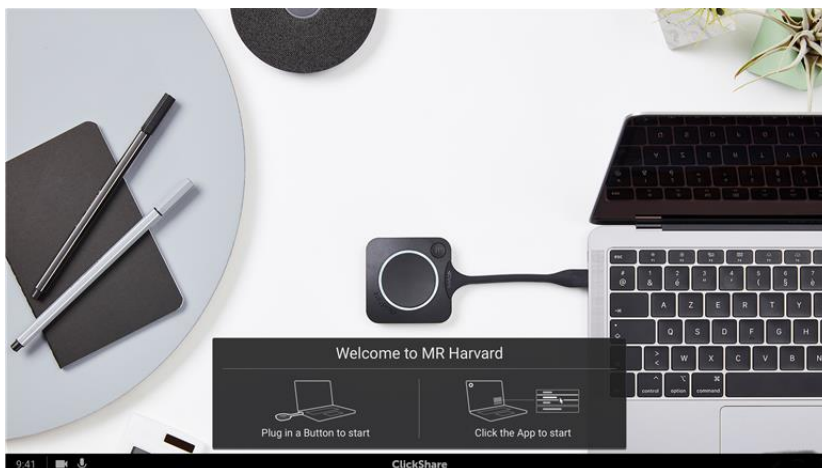
How to Use the Barco ClickShare System with Video Teleconferencing

1. Use the Samsung remote control to turn on the TV
2. Insert the Barco ClickShare button into the USB port on your computer



a.

3. The white ring on the Button is filling up. When totally filled up it goes to static white and is ready to share or it starts blinking to indicate that you have to start clickshare.exe on your computer. On your laptop a new drive appears. Different situations are possible now:
 - a. Nothing installed, LED ring fills up and starts flashing, indicating that the executable needs to be started by the user. Double-click the ClickShare application.
 - b. For Windows environment: when connected to internet, driver will be installed and the executable will be started by the driver.
 - c. For Mac environment: CD-ROM drive will appear, open it and launch the application to get started.
4. A launcher or the ClickShare desktop app is preinstalled on your laptop (downloaded from the Base Unit or Barco website, or deployed company-wide by your IT department). ClickShare is immediately available.
5. The television should now display this image, awaiting your button press:



a.

6. For instructions to use with **Microsoft Teams**:



7. For instructions to use with **Webex**:



8. For instructions to use with **Zoom**:

